

# TRAITS OF A GORILLA PIMP



## Tactics

Uses force: kidnapping, violence, drugs and/or blackmail to overpower prey



## “Lines” They Use:

“Come party with me.”  
“Don’t tell anyone.”  
“Do what I say or I’ll post photos.”



## Where They Target Their Prey

Teens at a party, the mall, social media... anywhere there is weak/no responsible supervision.



## What To Watch For:

Men and women 18+ who hang with younger girls who persistently invite teens to party and drink and do drugs with them.

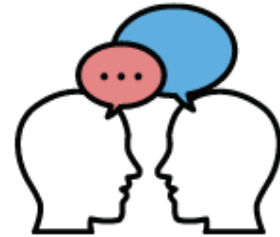


# TRAITS OF A ROMEO PIMP



## Tactics

Uses charm and gifts to romance prey



## “Lines” They Use:

“I love you.”

“Nobody else understands you like me.”

“I cant live without you.”

“I’ll give you everything you deserve.”



## Who They Target

Girls looking for love or acceptance.  
Sweet or naive young men and women.  
Runaways.



## What To Watch For:

Guys who fall “in love” too quickly.  
Guys or girls who encourage teens to run away from home, promising them a better life.

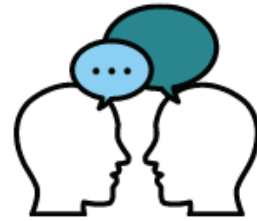


# TRAITS OF A CEO PIMP



## Tactics

Uses money and business strategies to swindle prey.



## "Lines" They Use:

"I'm an agent. You have what it takes to make it in the industry."  
"Trust me. I can make you rich."



## Who They Target

Aspiring models, entertainers, and actors, especially young naive women who are away from home.



## What To Watch For:

Men who flash cash and promise stardom.  
"Agents" who want bikini shots or "artistically nude" photos.

